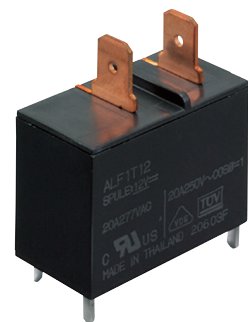
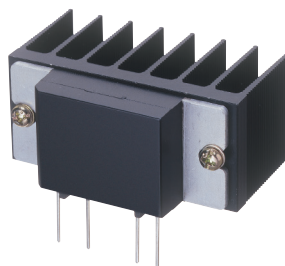


Panasonic

RELAYS OVERVIEW

R

A comprehensive look at
Panasonic's Relay portfolio

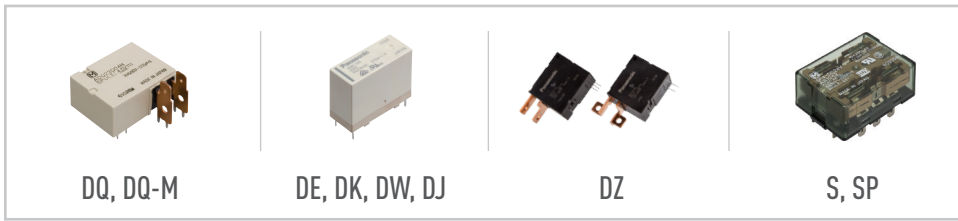


na.industrial.panasonic.com/products/relays-connectors/relays

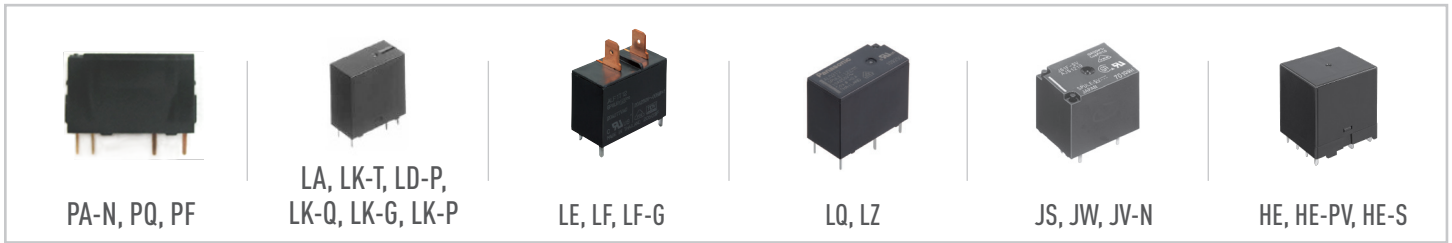
ELECTROMECHANICAL RELAYS

POWER ($\geq 2A$)

POLARIZED



NON-POLARIZED



HIGH CAPACITY DC



GENERAL PURPOSE



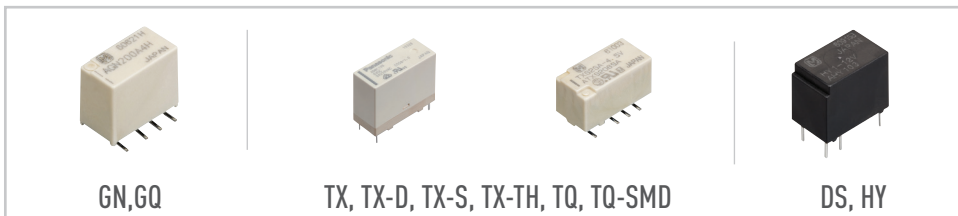
SAFETY



ELECTROMECHANICAL RELAYS

SIGNAL ($\leq 2A$)

GENERAL PURPOSE

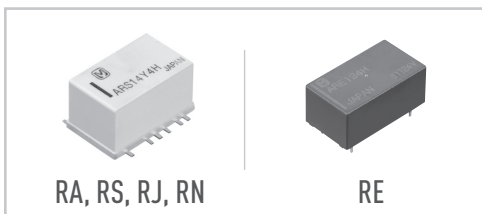


* Surface Mount Type is available in all Signal Relays except DS

ELECTROMECHANICAL RELAYS

MICROWAVE DEVICES ($\sim 8GHz$)

HIGH FREQUENCY ($\sim 8GHz$)



* Surface Mount Type is available in RE Series

ELECTROMECHANICAL RELAYS

AUTOMOTIVE

PLUG-IN & SMD ($\leq 40A$)



TA, TB, TC,
TE, TG, TJ, TH



CA, CB, CM, CV-N



CJ, CN-H, CN-M



CP, CP-P,
CT, CT-P, CQ

HIGH CAPACITY DC ($\leq 300A$)



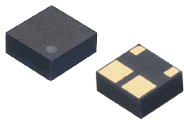
EV

* Automotive Spec review needs to be completed for all Automotive Relays.

SOLID STATE RELAYS

PHOTOMOS ($\leq 6A$)

CAPACITIVE-COUPLED ISOLATION



TSON/AQY2C

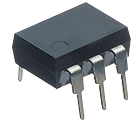
MOSFET DRIVER



SSOP/APV 4-PIN



SOP/APV 4-PIN



DIP/APV 6-PIN

OPTICAL ISOLATION



VSSOP/AQY 4-PIN



SSOP/AQY 4-PIN



SOP/AQY 4-PIN



SOP/AQV 6-PIN



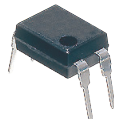
SOP/AQW 8-PIN



SOP/AQS 16-PIN



SON/AQY



DIP/AQY 4-PIN



DIP/AQV 6-PIN



DIP/AQW 8-PIN

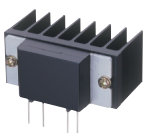


SIL/AQZ 4-PIN

SOLID STATE RELAYS

TRIAC/TRANSISTOR

THROUGH-HOLE & SMD



AQ1, AQ8



AQ-C, AQ-G, AQ-H

HIGH CAPACITY



AQ-A, AQ-J

PHOTOTRIAC COUPLER



APT

* Surface Mount Type is available in APT and AQH



R

Panasonic

Panasonic Industrial Devices Sales Company of America
Two Riverfront Plaza, 7th Floor, Newark, NJ 07102

800-344-2112 | na.industrial.panasonic.com | industrial@us.panasonic.com

Copyright © 2016 Panasonic Corporation of North America. | All Rights Reserved. Specifications are subject to change without notice. | Relays Overview, FY16-018